

Encore3

The world's most versatile screen management system





BETTER - FASTER - STRONGER

Yes, we heard the 'we want more' call of all you live event AV professionals. Here's our answer. With Barco's newest Encore3, screen management just became increasingly versatile.

BETTER – FASTER - STRONGER

All boxed into one future-proof solution for expanded peace of mind.

A powerful processor for every event

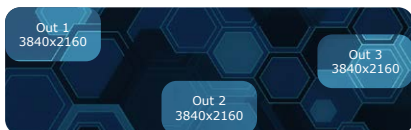
The Barco **Encore3** image processing platform is nothing short of a game-changer giving unparalleled image quality, broader canvas space, expanded system resources by easy linking, and advanced transition between layers during runtime. High-quality processing with unrivaled flexibility - all boxed into one future-ready solution.

The Encore3 is an output-driven box enabling boundless canvases! It supports 8x 4K60 PVW/PGM outputs with a mixing background layer and 16 fully capable 4K60 layers per screen at 12 bits 4:4:4 processing. You can programme the outputs and layers to support a mixture of resolutions maximizing your system flexibility.

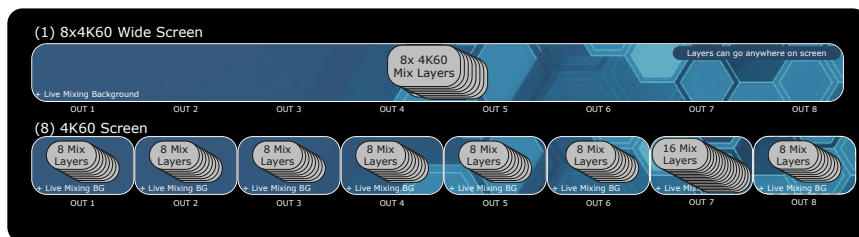


Expand your creative canvas beyond boundaries

Encore3 is an output driven system. Any unused space between outputs isn't utilizing resources. That's your boundless canvas.

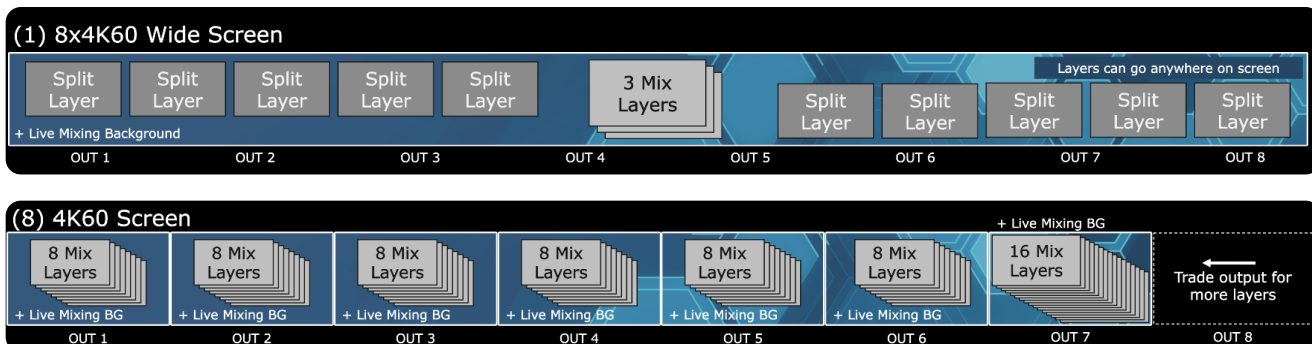


Use the 4K60 outputs independently or combine them any way you want on larger screens



Use the layers to your needs

Layers are always assigned. Use them as mixer or split and recall them with presets. Regardless of your screen size, you always have 8 mixer layers per screen.

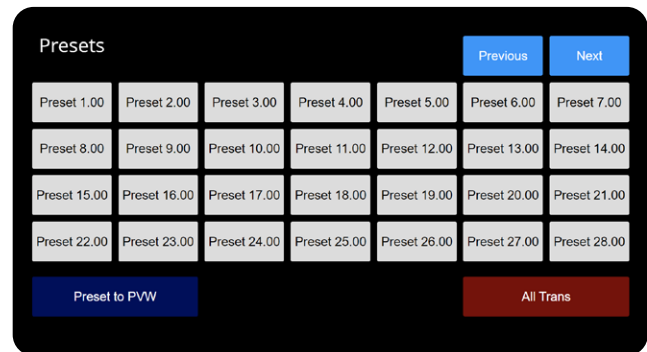


Fast and easy set-up

Streamline your event setup, eliminate unnecessary hassle, and unlock new levels of efficiency with the Encore3 screen management system. Thanks to its intuitive interface, assisted workflows and simulated programming features, we reduce the manual actions in the pre-configuration and resource management. And with full situational awareness and integrated show control features, you can execute your vision with precision and confidence, every time.

Operational ease of use

The onboard **programmable web widget panel** and customizable preset configuration enables easy show control.



The **2x 4K60 Multiviewer** and its comprehensive overview of any input and output in the system allows for full situational awareness while creating the most impressive experiences. What's more you can use the freeform Multiviewer as a source usable across all layers and outputs.



With an interface of embedded audio to Dante, the Encore3 continues the integration of digital **audio routing** in our image processing portfolio. Dante audio is supported both ways. Able to route audio from input to dante and from dante to outputs. It is your partner to deliver the most seamless event experience possible with high-quality video and audio.

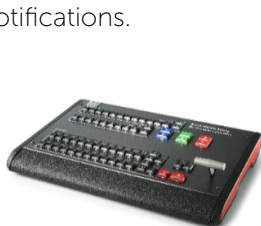
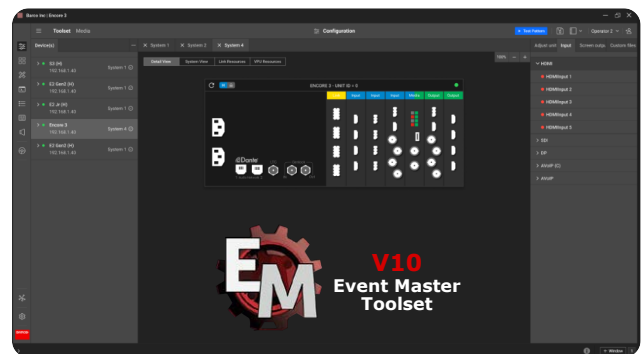


Event Master Toolset

The Encore3 can be controlled with the refined yet familiar user interface of the Event Master Toolset. The toolset provides a step-by-step approach to configuring, programming presets, setting up the dedicated Multiviewer, and managing screens functions. And thanks to the external API it can also be integrated with other third- party control panels.

Working together with users in the field, we regularly upgrade our image processing firmware and software with a bunch of new features and improved functionalities that are highly wanted by the community!

With a quick update you are ready for the future. If you want to stay informed about available future updates, make sure to subscribe to the myBarco support page of your presentation switcher, check your mailbox for notifications.



EC-30



EC-50



EC-210

As an extension of the Event Master toolset, the Event Controllers bring sources, presets, layers, cues and destination selection at your fingertips.

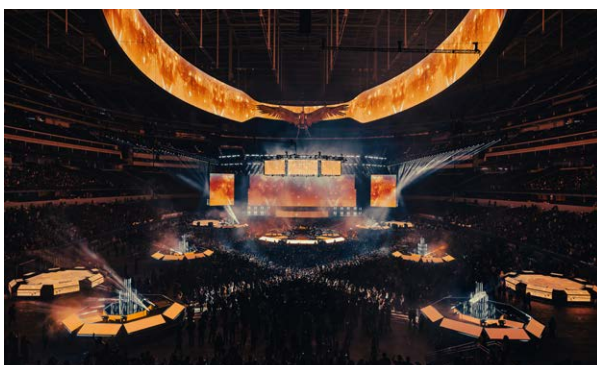
State-of-the-art technology

Investing in the Encore3 isn't just an investment in today—it's an investment in tomorrow. The system adopts a forward-looking design aimed at providing event professionals with a future-proof solution.

20 years of R&D experience allowed us to build a hardware that is simple yet powerful.

The rugged Encore3 features a metal chassis that's able to withstand the challenging conditions of life on the road. Thanks to its modularity and the dual redundant power supplies, the Encore3 is extremely reliable and easy to service in the field.

Built with durability in mind the Encore3 is a powerhouse that's dedicated to delivering the strongest, most seamless event production possible.



Designed to maximize your investment

The Encore3 has four flex slots which allow for either Gen2 input or output cards supporting 4x4K60.

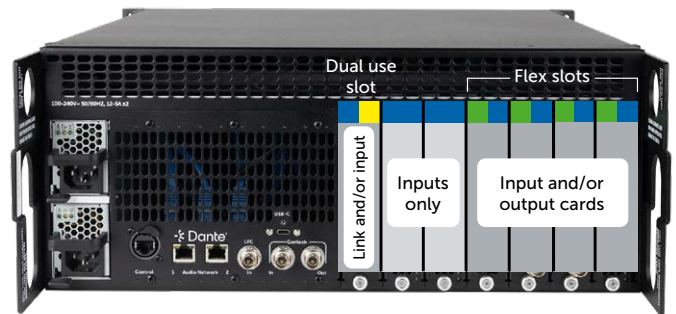
These flex slots enable future I/O cards to have concurrent inputs and outputs. In total, a single system supports up to seven input capable card slots and up to four output capable card slots, but with each card handling up to 4x 4K@60p sources.

The flexible slot-based architecture and modular cards not only enhances customization but also safeguards your investments through the reuse of Gen2 cards and controllers already in your inventory and ensures that the system can evolve alongside the rapidly changing landscape of AV technology.

In addition, the processor also ships with the ability to link two chassis to support bigger shows.

Easily expand your system and combine the power of two units through the new Quad 100G high speed expansion link card and widely available QSFP28 100G connectors to increase available inputs and outputs for larger displays and widescreen applications. Each link card offers 16x 4K60 sources to be shared each way.

Choose Single Mode Fiber for long distance or Direct Attach Copper cables for in rack connectivity suited for your needs.



Build your own configuration

Event Master Encore3 will have a standard, finished and stocked configuration. But as it's a scalable and modular system, it will also be available as "Build To Order" system.

With a BTO approach and expandable I/O count, you have the flexibility to tailor the system to your exact requirements. Small shows or large-scale productions – the Encore3 has the strength and flexibility to handle it all and grow with your needs.

In addition, you can easily expand your system and combine the power of two units to increase available inputs and outputs for larger displays and widescreen applications.



Compatible Gen2 cards:



4K60 Tri-combo input card



4K60 Tri-combo output card



HDMI 2.0 quad input card



HDMI 2.0 quad output card



DisplayPort 1.2 quad input card



DisplayPort 1.2 quad output card



Standard configuration



BTO configuration

Inputs	<ul style="list-style-type: none">• 16x 4K@60p inputs• Up to 4x HD/3G/6G/12G SDI• Up to 9x HDMI2.0 (600 MHz max)• Up to 5x DisplayPort 1.2 (660 MHz max)	Up to 7 input capable card slots, each input card supports up to 4x 4K@60p inputs
Outputs	<ul style="list-style-type: none">• 8x 4K@60p outputs• Up to 4x HD/3G/6G/12G SDI• Up to 5x HDMI2.0 (600 MHz max)• Up to 1x DisplayPort 1.2 (660 MHz max)	Up to 4 output capable card slots, each output card supports up to 4x 4K@60p inputs
Expansion	<ul style="list-style-type: none">• 1x Quad 100G High Speed Expansion Link Card• includes 2x 100G QSFP28 2 meter DAC cables.	Up to 1x Link card per chassis Expansion up-to 16x 4K60 in & out per card

© 2024 Barco NV. All rights reserved. Reproduction in whole or in part without written permission is prohibited. All brand names and product names are trademarks, registered trademarks or tradenames of their respective holders. Due to continued innovation, information and technical specifications are subject to change without prior notice. Please check www.barco.com for the latest specifications.

