



„Speak | See“

The **FOLD! 173 CONMIC** is the perfect solution when combining presentation and conference technology, video and audio: A robotic retractable touchscreen combined with a whisper-quiet retractable gooseneck microphone.

The 8mm slim 17.3-inch FullHD monitor of the **award-winning FOLD!** and the integrated gooseneck microphone move independently and virtually silently in a compact aluminum housing. At the touch of a button. Like a robotic arm, the ultra-thin display extends forward. When extended, it remains just above the table surface. Equipped with a touch display, it can now be used like a tablet - in a comfortable working position and with an adjustable tilt angle.

The electronic and mechanical components are state-of-the-art. **The elegant monitor and microphone unit** offers unparalleled durability and outstandingly low power consumption.

One of a kind.
Made in Germany.
Made for Meetings.

FOLD! 173 CONMIC

**ELEMENT ONE
Multimedia GmbH**

Zum Murgdamm 5
76456 Kuppenheim
Germany

Fon: +49 (0) 7222 966 54 20

Mail: info@element-one.de
www.element-one.de



Perfect impression | Perfect operation

The integrated FOLD! impresses with its unique look and innovative movement mechanism.

Installed in the perfect position in the table, it also guarantees ergonomically ideal use of the touchscreen. The result: Today's **most effective presentation and communication** at the table and in the meeting room.

- Most compact housing dimensions
- Innovative, award-winning monitor movement FOLD! with 8mm display
- 2mm anti-reflective protective screen
- Precise gooseneck microphone guide, prepared with XLR interface
- Brushed stainless steel for mounting frame and closing flap
- Aluminum monitor housing
- DirectAxleAccess for manual retraction and extension - ideal for service and maintenance purposes
- HDMI HDCP compatible; FullHD resolution
- Total of three precise stepper motors 12V, for display and microphone.
- Low power consumption, typ. 15W
- Electronic clamping protection
- Mechanical protection in case of maloperation
- HydraulicSaveSystem against mechanical malfunction
- 5 years limited warranty



FEATURES

FOLD! 173 CONMIC



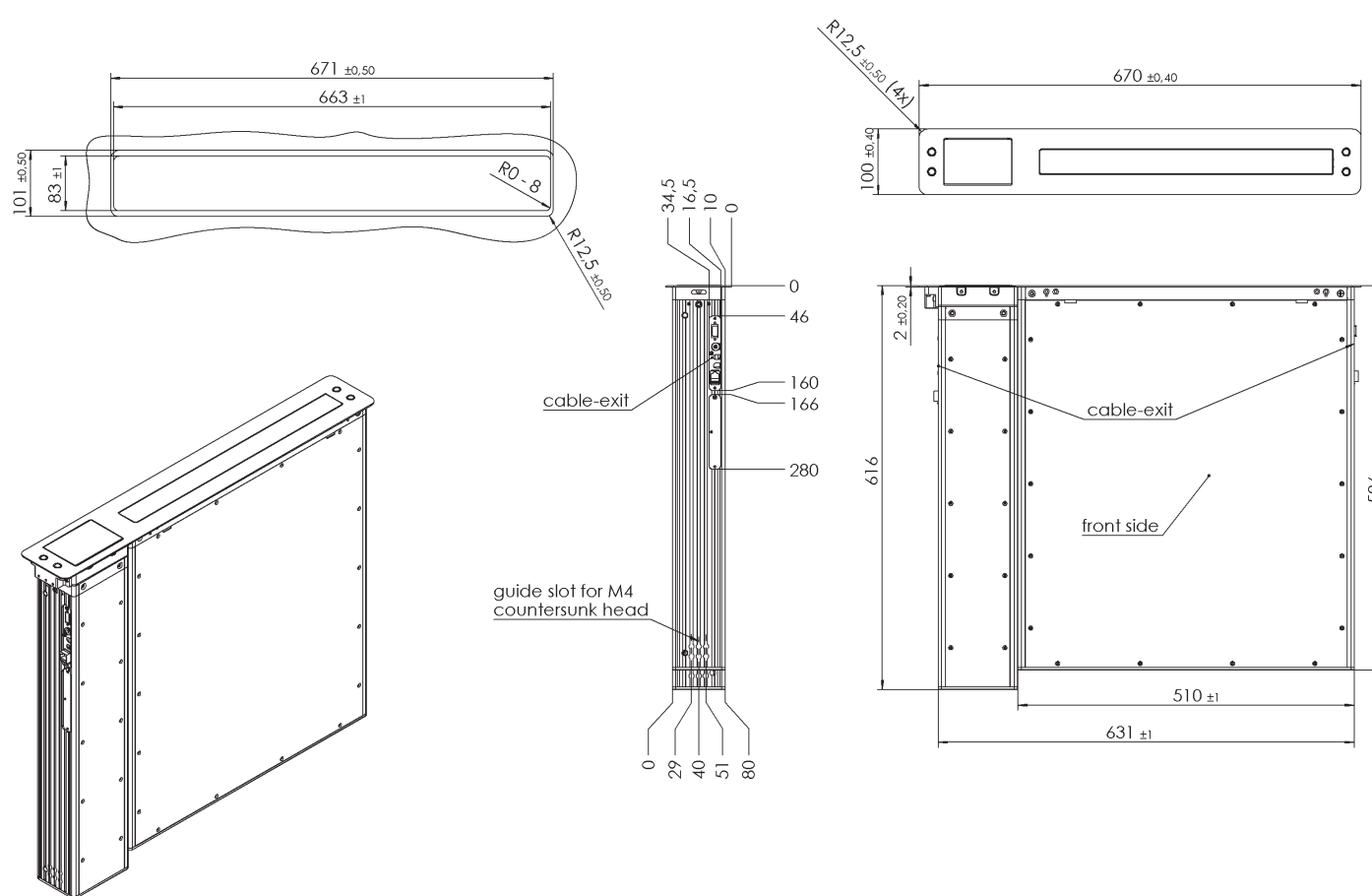
TECHNICAL DATA

Product Specification



Art.No.	250-173-T IP FOLD TOUCH 250-173-T IP FOLD TOUCH EXT	Screen size:	17.3" (16:9)
Type	CONVERS 173 FOLD CONMIC TILT TOUCH	Resolution:	1,920 x 1,080 - Full HD, 262,144 colors
Function	Vertically movable monitor; furniture-integratable 17.3" monitor system with electromechanical drive / lifting system of the integrated 8mm slim aluminum display and the left gooseneck microphone; automatic display tilt 15°-90°; inverse vertical movement; control via push-button on the unit or via remote control interfaces (TCP/IP or contact); manual extension function DirectAxleAccess for service, maintenance, installation purposes. Low noise <40dB; three 12 V stepper motors with precise synchronization - for simultaneous extension when using multiple monitors and microphones; independent electromotive adjustment of the tilt angle - both central presetting via remote interface and individual adjustment by user.	Brightness:	300 cd/m ²
Material	Monitor: Milled aluminum, powder coated, 2 mm anti-reflective protective glass Mechanics: Anodized aluminum, stainless steel; Mounting frame and cover flap: stainless steel, brushed	Contrast:	(typ.) 700:1
		Viewing angle:	Horizontal 160 ° / Vertical 160 °
		Viewing area:	381.888 (v) x 214.812 mm
		Pixel size:	0.1989 x 0.1989 mm
		LED lifetime:	up to 15,000 hours
		Mass:	20 kg
		Dimensions:	670 x 100 x 586 mm (LxWxD)
		Microphone:	prepared for 1x XLR gooseneck (L max 430mm [standard version] or 530mm [extended version], not included)
		Power consumption:	typ. 15 Watt
		Pwr. consumpt. monitor:	OFF: 0.12 watts, Sleep: 0.60 watts, ON: 5.6 watts
		Tilt angle:	15°-90°
		Monitor extension height:	305mm at 90° / 112mm at 15°
		3x stepper motors:	Separate extension function monitor, microphone, monitor inclination
		Video interface:	HDMI, Displayport *, DVI **, HDCP compatible
		Remote control:	9-pin d-sub serial and RJ45 TCP/IP for device control & adjustment of extension parameters & firmware update (E1 cable & software required)
		Scope of delivery:	Power supply - Input: 100-240V AC, 50 / 60Hz. 1.5A; Output: 12V 60W MAX 5.A (Cable length DC ~ 140cm) Power cable 1.5m

* optional, additional interface | ** optional, instead of HDMI



Dimensions



We'd be delighted to offer our expertise in the planning and selection of the right solution for your needs. If required, we can send further technical drawings, detailed photographs, material samples and, of course, demo devices – perfect to handle and try out.

Simply call us on +49 (0)7222 96654-20

Or send us an e-mail at: info@element-one.de

ELEMENT ONE

Multimedia GmbH

Zum Murgdamm 5

76456 Kuppenheim

Germany

Fon: +49 (0) 7222 966 54 20

Mail: info@element-one.de

www.element-one.de